

PARALLEL-O-MATIC



Light type. Strong performance.

The front loader generation "POM-R" was especially developed for semi-professional users. Regardless of the light type of the "R" front loader, rationality, efficiency and universal usability are integral features of the front loader. The solidly designed profile of the loading arm made of fine-grained steel, the position of the hydraulic lines, the modular hydraulic valve system and the attractive design make the "POM-R" a partner for many years.

Of course, we also use the existing brackets of "Top-Block" and respectively "Oberrahmen" system.



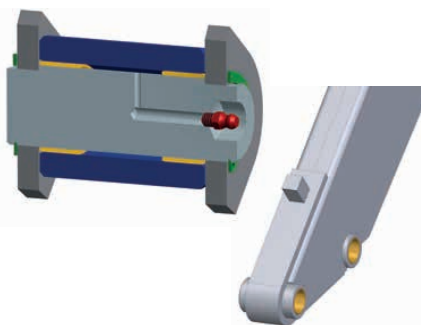
Technical details:

loading arm profile



robust construction made of fine-grained steel, hydraulic lines protected under the loading arm

bearing bolts, bearing bushes



bearing bolts, with enlarged dimensions, all service points are easily accessible on the sides and equipped with replaceable bearing bushes

parking props



foldable, robust design, simple handling with locking bolts, additional protection of hydraulic lines



efficient & universal

optional equipment:

quick-change device – SWE



automatically locking when coupling the implement; ergonomic hand lever, ideally positioned

multi-coupling “Synchro-Lock”



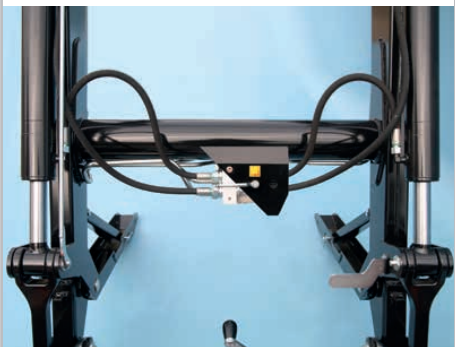
coupling of hydraulic (and electrical) connections quickly in one step, coupling under pressure, no leakage, no mixing up of connectors

additional hydraulic function



for using grippers or holding down devices, coupling connections easily accessible, also available with appropriate Synchro-Lock

hydraulic valve system POM-“R”



connection plate with rapid movement valve for two tilting velocities, modular design, hydraulic lines of steel, valves protected by robust steel cover

front loader shock absorption SMS



for transport works on uneven ground, protects front loader, tractor and increases driving comfort, switching on/off mechanically.

joystick operated control valve

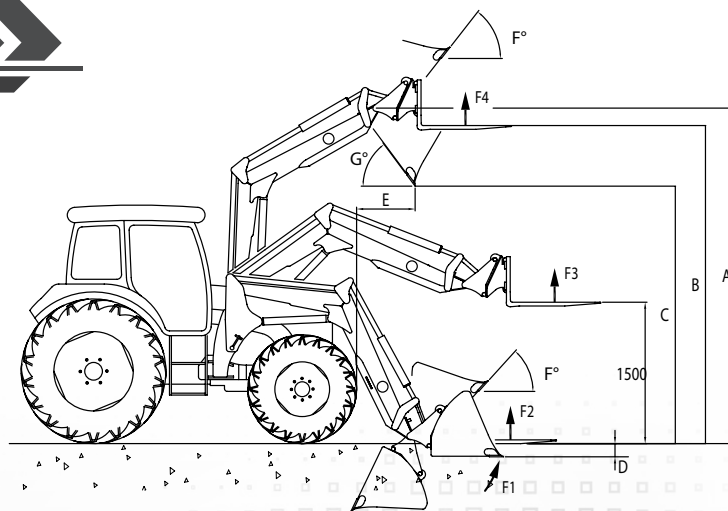


reliable control unit, which can be controlled by a mechanical joystick, with all functions on one handle

standard equipment:



- front loader Parallel-o-Matic “POM-R“ with mechanical parallel guidance, front guard, hydraulic supply up to the original control unit, mounting bracket and screw kit
- hydraulic lines mounted under the loading arm
- shut-off valve in the lifting line
- replaceable bearing bushes at all bearing points
- double acting lifting cylinders
- differential tilting cylinder, secured by a tandem security valve
- valve block system “POM-R“
- switchable rapid movement valve for two tilting velocities
- quick-change device “Euro 8” hooks, or original Hauer “SWE-B”



Technical data:

front loader-type “POM-R”		40	50	70	90	95
weight OR	kg	440	460	467	500	507
weight TBS	kg	411	423	430	463	470
recommended tractor power	hp	to 55	to 65	to 80	75-110	75-110
	kW	to 40	to 48	to 59	55-81	55-81
max lifting height – implement rotating point	A	3110	3390	3560	3770	3985
max lifting height pallet fork	B	2925	3205	3375	3585	3800
free dumping height	C	2183	2463	2633	2843	3058
digging depth	D	145	145	145	145	145
dumping width at max. lifting height	E	650-750	750-850	800-950	900-1050	900-1050
breaking force earth shovel	F1	1710	1710	1710	2200	2200
lifting force on the ground with pallet fork	F2	1230	1600	1900	1850	1960
lifting force up to 1500 with pallet fork	F3	1150	1290	1470	1580	1780
lifting force max. height with pallet fork	F4	1000	1010	1300	1340	1490
initial tilting angle	F°	45	46	48	48	49
dumping angle	G°	56	54	52	52	51

Figures and details are approximate and non-binding and change slightly depending on the attachment height of the front loader and tyres of the tractor. Measured at approximately 185 bar.

Franz Hauer GmbH & CoKG

A-3125 Statzendorf, Werksstraße 6

Tel.: +43 / (0)2786 / 7104-0

Fax: +43 / (0)2786 / 7104-15

e-mail: info@hfl.co.at; Internet: www.hfl.co.at

